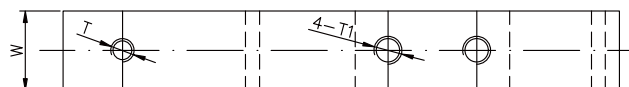
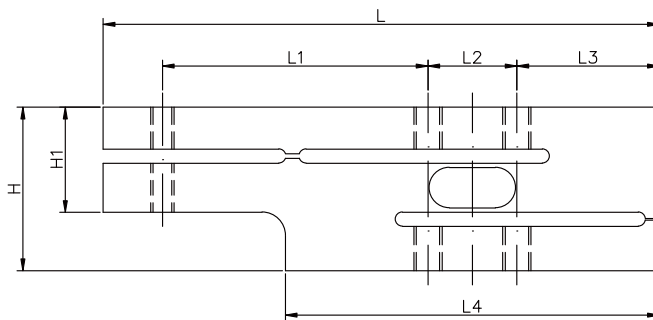
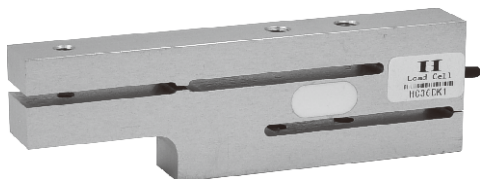


ALUMINUM 铝合金



尺寸 DIMENSIONS

Rate Capacity 量程

| | L | L1 | L2 | L3 | L4 | W | H | H1 | T | T1 |
|---|------|------|------|------|------|------|------|------|----|----|
| kg/mm | | | | | | | | | | |
| 5-100 | 119 | 56.8 | 19 | 30.5 | 80 | 17 | 35 | 22.5 | M5 | M6 |
| lb/inches(conversion of above dimensions 由以上尺寸转换) | | | | | | | | | | |
| 11-220 | 4.69 | 2.24 | 0.75 | 1.20 | 3.15 | 0.67 | 1.38 | 0.89 | M5 | M6 |

技术参数 SPECIFICATIONS

| | | | |
|-------------------------|--------------------|--------------------------------|--|
| Full Scale Output 灵敏度输出 | $2.0 \pm 10\%mV/V$ | Recommended Excitation 使用电压 | 10V(15V Maximnm) |
| Zero Balance 零点输出 | $\pm 0.04mV/V$ | Insulation Resistance 绝缘阻抗 | $>2[50V DC]G\Omega$ |
| Nonlinearity 非线性 | $< \pm 0.03\%$ | Nominal Temperature Range 工作温度 | $-10^{\circ}C$ to $40^{\circ}C$ / $14^{\circ}F$ to $104^{\circ}F$ |
| Repeatability 重复性 | $< \pm 0.03\%$ | | |
| Hysteresis Error 滞后 | $< \pm 0.03\%$ | Safe Overload 安全过载 | 150% of full scale |
| Creep in 30 min 30分钟蠕变 | $< \pm 0.05\%$ | Breaking Overload 极限过载 | 300% of full scale |
| Input Resistance 输入电阻 | $415\Omega \pm 5$ | IP Rating 防护等级 | IP67 |
| Output Resistance 输出电阻 | $350\Omega \pm 3$ | Cable Color Code 颜色码 | Exc(输入)+:Red(红);Exc(输入) -Black(黑);Sig(输出)+Green(绿); Sig(输出)-:Whit(白) Shield Bare(屏蔽) |
| Element Materia 材质 | Aluminum 铝合金 | | |

714A

Special Features 特征

- ◆ 易于安装, 性能稳定
- ◆ 抗过载能力强
- ◆ 适用于限位过载用途
- ◆ IP67 防护
- ◆ Easy installation reliable performance
- ◆ Strong overload resistance
- ◆ Suitable for limit overload
- ◆ Protection to Ip67