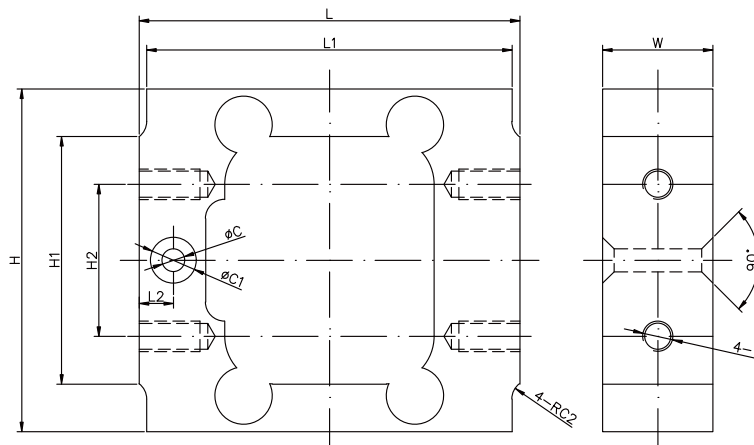
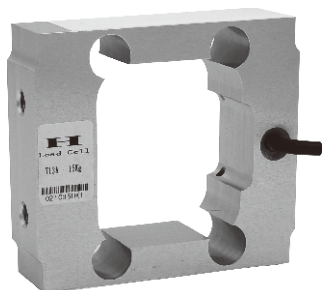


## ALUMINUM 铝合金



### 尺寸 DIMENSIONS

#### Rate Capacity 量程

	C	C1	C2	L	L1	L2	W	H	H1	H2	T
kg/mm											
15	6	12	5	100	96	9	29	90	65	40	M8深16
lb/inches (conversion of above dimensions 由以上尺寸转换)											
33	0.24	0.47	0.20	3.94	3.78	0.35	1.14	3.54	2.56	1.57	M8DP0.63

### 技术参数 SPECIFICATIONS

Full Scale Output 灵敏度输出	$2.0 \pm 10\% \text{mV/V}$	Recommended Excitation 使用电压	10V(15V Maximmm)
Zero Balance 零点输出	$\pm 0.02 \text{mV/V}$	Insulation Resistance 绝缘阻抗	$>2[50\text{V DC}] \text{G} \Omega$
Nonlinearity 非线性	$< \pm 0.2\%$	Nominal Temperature Range 工作温度	$-10^\circ\text{C}$ to $40^\circ\text{C}$ / $14^\circ\text{F}$ to $104^\circ\text{F}$
Repeatability 重复性	$< \pm 0.2\%$		
Hysteresis Error 滞后	$< \pm 0.2\%$	Safe Overload 安全过载	150% of full scale
Creep in 30 min 30分钟蠕变	$< \pm 0.2\%$	Breaking Overload 极限过载	300% of full scale
Input Resistance 输入电阻	$415 \Omega \pm 5$	IP Rating 防护等级	IP66
Output Resistance 输出电阻	$350 \Omega \pm 3$	Cable Color Code 颜色码	Exc(输入)+:Red(红);Exc(输入) -Black(黑);Sig(输出)+Green(绿); Sig(输出)-:Whit(白) Shield Bare(屏蔽)
Element Materia 材质	Aluminum 铝合金		

## 713A

### Special Features 特征

- ◆ 符合OIML认证指标
- ◆ 高精度
- ◆ IP66 防护
- ◆ 易于安装, 性能稳定
- ◆ 铝合金
- ◆ Comply with OIML C3
- ◆ High accuracy
- ◆ Protection to Ip66
- ◆ Easy installation reliable performance
- ◆ Aluminum alloy materia