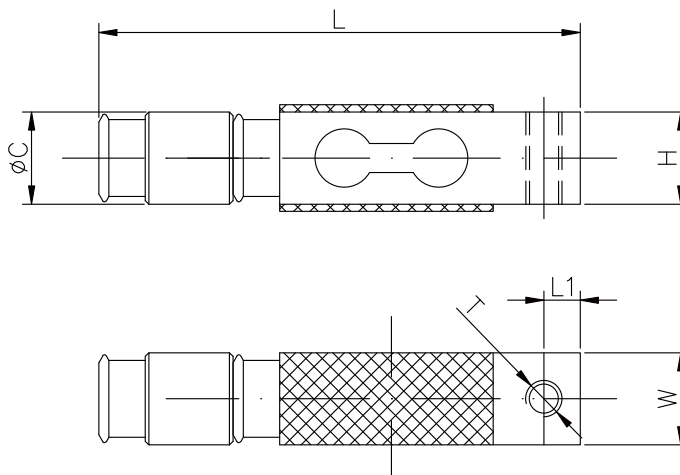
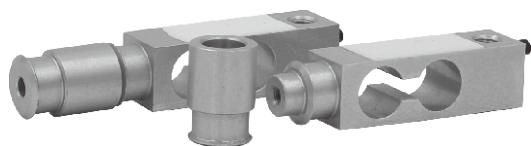


651JM

ALUMINUM
铝合金



尺寸 DIMENSIONS

Rate Capacity

量程	C	L	L1	W	H	T
kg/mm						
20-50	12.7	66.3	5	12.7	12.7	M5
lb/inches(conversion of above dimensions 由以上尺寸转换)						
44-110	0.5	2.61	0.20	0.5	0.5	M5

技术参数 SPECIFICATIONS

Full Scale Output 灵敏度输出	$2.0 \pm 0.5\%mV/V$	Recommended Excitation 使用电压	10V(15V Maximmm)
Zero Balance 零点输出	$\pm 0.04mV/V$	Insulation Resistance 绝缘阻抗	$>2[50V DC]G\Omega$
Nonlinearity 非线性	$< \pm 0.03\%$	Nominal Temperature Range工作温度	$-10^{\circ}C$ to $40^{\circ}C/14^{\circ}F$ to $104^{\circ}F$
Repeatability 重复性	$< \pm 0.03\%$		
Hysteresis Error 滞后	$< \pm 0.03\%$	Safe Overload 安全过载	150% of full scale
Creep in 30 min 30分钟蠕变	$< \pm 0.05\%$	Breaking Overload 极限过载	300% of full scale
Input Resistance 输入电阻	$415\Omega \pm 5$	IP Rating 防护等级	IP66
Outnput Resistance 输出电阻	$350\Omega \pm 3$	Cable Color Code 颜色码	Exc(输入)+:Red(红);Exc(输入)-:Black(黑);Sig(输出)+Green(绿);Sig(输出)-:Whit白 Shield Bare(屏蔽)
Element Materia 材质	Aluminum 铝合金		

651JM

Special Features 特征

- ◆ 易于安装, 性能稳定
- ◆ Easy installation reliable performance
- ◆ 抗过载能力强
- ◆ Strong overload resistance
- ◆ 适用于限位过载用途
- ◆ Suitable for limit overload
- ◆ IP66防护
- ◆ Protection to IP66