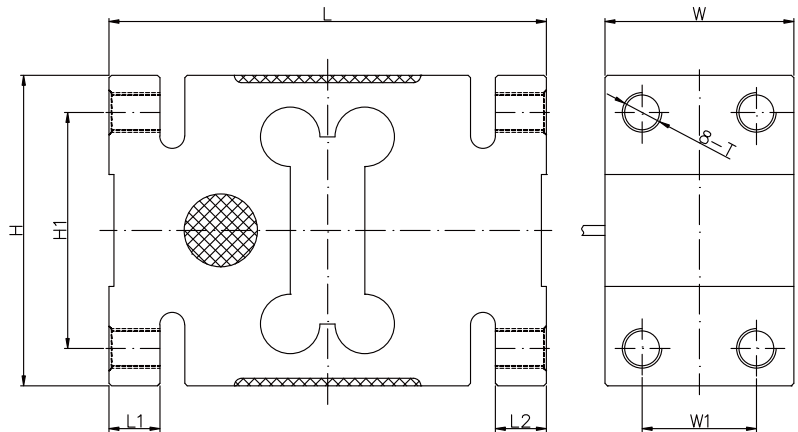
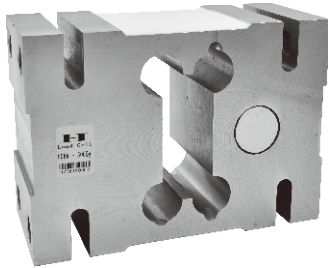


ALUMINUM 铝合金



尺寸 DIMENSIONS

Rate Capacity 量程

	L	L1	L2	W	W1	H	H1	T
kg/mm								
500~2000	176	20.5	2.05	76	46	125	95	M16X2
lb/inches(conversion of above dimensions 由以上尺寸转换)								
1,102.3~4,409.2	6.93	0.81	0.81	2.99	1.81	4.92	3.74	M16X2

技术参数 SPECIFICATIONS

Full Scale Output 灵敏度输出	$2.0 \pm 0.10\% \text{mV/V}$	Recommended Excitation 使用电压	10V(15V Maximmm)
Zero Balance 零点输出	$\pm 0.02\text{mV/V}$	Reference Max.Platform Size 最大秤台尺寸	1200*1200mm
Nonlinearity 非线性	$< \pm 0.017\%$	Insulation Resistance 绝缘阻抗	$> 2[50\text{V DC}] \text{G}\Omega$
Repeatability 重复性	$< \pm 0.017\%$	Nominal Temperature Range 工作温度	-10°C to 40°C / 14°F to 104°F
Hysteresis Error 滞后	$< \pm 0.017\%$	Safe Overload 安全过载	150% of full scale
Creep in 30 min 30分钟蠕变	$< \pm 0.023\%$	Breaking Overload 极限过载	300% of full scale
Input Resistance 输入电阻	$415\Omega \pm 15$	IP Rating 防护等级	IP66
Output Resistance 输出电阻	$350\Omega \pm 3$	Cable Color Code 颜色码	Exc(输入)+:Red(红);Exc(输入)-:Black(黑);Sig(输出)+:Green(绿);Sig(输出)-:Whit(白) Shield Bare(屏蔽)
Element Materia 材质	Aluminum 铝合金		

608A

Special Features 特征

- ◆ 通常精度可达C3,5000分度值
- ◆ 角差修正
- ◆ 台面最大尺寸500kg 600*800mm;750~2000kg 1200*1200mm
- ◆ IP66防护
- ◆ High accuracy regulations up to 5000d for Scales class III
- ◆ Off-center load compensated
- ◆ Max.platform size:500kg 600*800mm 750~2000kg 1200*1200mm
- ◆ IP66 protection