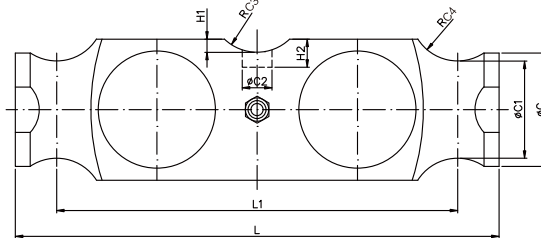
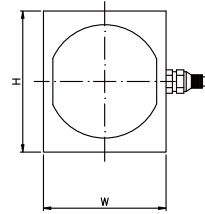
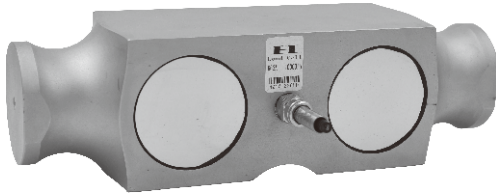


ALLOY STEEL / STAINLESS STEEL 合金钢/不锈钢



桥式称重传感器

尺寸 DIMENSIONS

Rate Capacity 量程

	C	C1	C2	C3	C4	L	L1	W	H	H1	H2
t/mm											
22.04-99.21	61	52	22	25.4	25.4	260	216	64	72	6	19
110.23-22.46	70	60	30	38.1	38.1	292	254	76	86	10	25
klb/inches (conversion of above dimensions 由以上尺寸转换)											
10-45	2.40	2.05	0.87	1.00	1.00	10.24	8.50	5.52	2.83	0.24	0.75
50-1000	2.75	2.36	1.18	1.50	1.50	11.50	10.00	2.99	3.39	0.39	0.98

技术参数 SPECIFICATIONS

Full Scale Output 灵敏度输出	$2.0 \pm 0.1\% mV/V$	Recommended Excitation 使用电压	10V(15V Maximmm)
Zero Balance 零点输出	$\pm 0.04 mV/V$	Insulation Resistance 绝缘阻抗	$>2[50V DC]G \Omega$
Nonlinearity 非线性	$< \pm 0.03\%$	Nominal Temperature Range 工作温度	$-10^{\circ}C$ to $40^{\circ}C$ / $14^{\circ}F$ to $104^{\circ}F$
Repeatability 重复性	$< \pm 0.03\%$		
Hysteresis Error 滞后	$< \pm 0.03\%$	Safe Overload 安全过载	150% of full scale
Creep in 30 min 30分钟蠕变	$< \pm 0.05\%$	Breaking Overload 极限过载	300% of full scale
Input Resistance 输入电阻	$775 \Omega \pm 5$	IP Rating 防护等级	IP67/IP68
Output Resistance 输出电阻	$702 \Omega \pm 2$	Cable Color Code 颜色码	Exc(输入)+:Red(红);Exc(输入) -Black(黑);Sig(输出)+Green(绿); Sig(输出)-:Whit(白) Shield Bare(屏蔽)
Element Materia 材质	Alloy steel/Stainless steel 合金钢/不锈钢		

663A

Special Features 特征

- ◆ 符合OIML认证指标
- ◆ Comply with OIML C3
- ◆ 高精度
- ◆ High accuracy
- ◆ 合金钢
- ◆ Alloy steel construction
- ◆ 易于安装, 性能稳定
- ◆ Easy installation reliable performance
- ◆ 合金钢/不锈钢
- ◆ Alloy/Stainless steel available