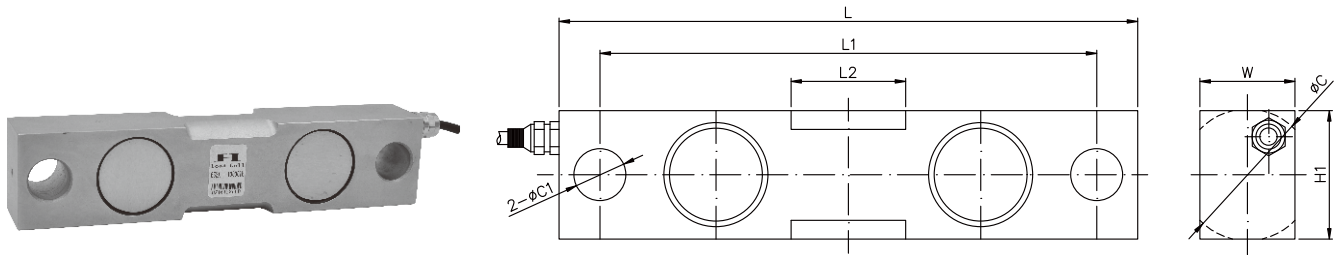


ALLOY STEEL / STAINLESS STEEL
合金钢/不锈钢



尺寸 DIMENSIONS

Rate Capacity 量程	C	C1	L	L1	L2	W	H
t/mm							
22-55	50.5	20.6	222.3	190.5	41.1	36.3	49.3
77	64.8	20.6	222.3	190.5	41.1	38.1	63.5
110-165	75.9	33.3	393.7	292.1	82.5	62	74.7
220	107.9	41.4	469.9	381	82.5	74.7	100.1
klb/inches(conversion of above dimensions 由以上尺寸转换)							
10-25	1.99	0.81	8.75	7.50	1.62	1.44	1.94
35	2.55	0.81	8.75	7.50	1.62	1.50	2.50
50-75	2.99	1.31	15.50	11.50	3.25	2.44	2.94
100	4.25	1.63	18.50	15.00	3.25	2.9	3.94

技术参数 SPECIFICATIONS

Full Scale Output 灵敏度输出	$2.0 \pm 0.1\% mV/V$	Recommended Excitation 使用电压	10V(15V Maximmm)
Zero Balance 零点输出	$\pm 0.04 mV/V$	Insulation Resistance 绝缘阻抗	$>2[50V DC]G \Omega$
Nonlinearity 非线性	$< \pm 0.03\%$	Nominal Temperature Range 工作温度	$-10^{\circ}C$ to $40^{\circ}C$ / $14^{\circ}F$ to $104^{\circ}F$
Repeatability 重复性	$< \pm 0.03\%$		
Hysteresis Error 滞后	$< \pm 0.03\%$	Safe Overload 安全过载	150% of full scale
Creep in 30 min 30分钟蠕变	$< \pm 0.05\%$	Breaking Overload 极限过载	300% of full scale
Input Resistance 输入电阻	$775 \Omega \pm 5$	IP Rating 防护等级	IP67/IP68
Outnput Resistance 输出电阻	$702 \Omega \pm 2$	Cable Color Code 颜色码	Exc(输入)+:Red(红);Exc(输入) -Black(黑);Sig(输出)+Green(绿); Sig(输出)-:Whit(白) Shield Bare(屏蔽)
Element Materia 材质	Alloy steel/Stainless steel 合金钢/不锈钢		

653A

Special Features 特征

- ◆ 符合OIML认证指标
- ◆ Comply with OIML C3
- ◆ 高精度
- ◆ High accuracy
- ◆ 合金钢
- ◆ Alloy steel construction
- ◆ 易于安装, 性能稳定
- ◆ Easy installation reliable performance
- ◆ 合金钢/不锈钢
- ◆ Alloy/Stainless steel available